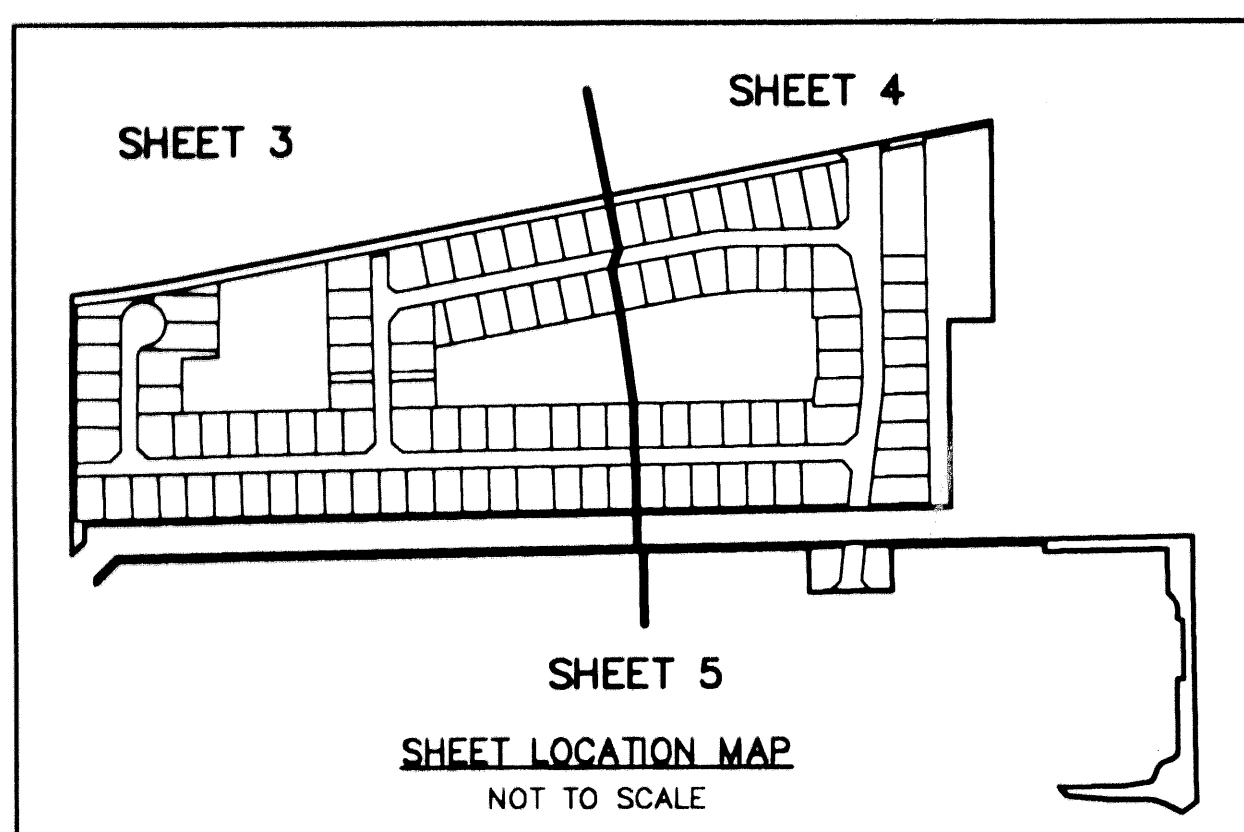
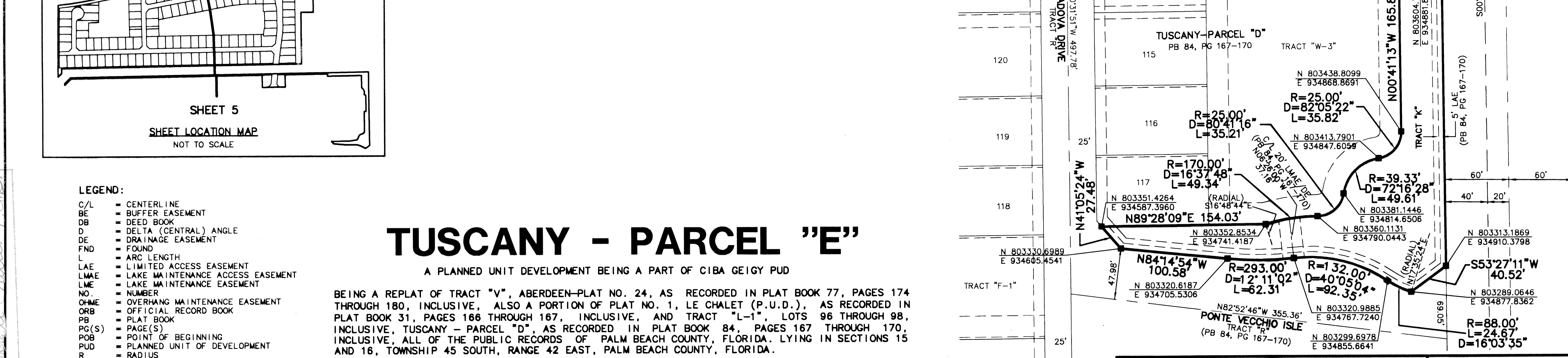
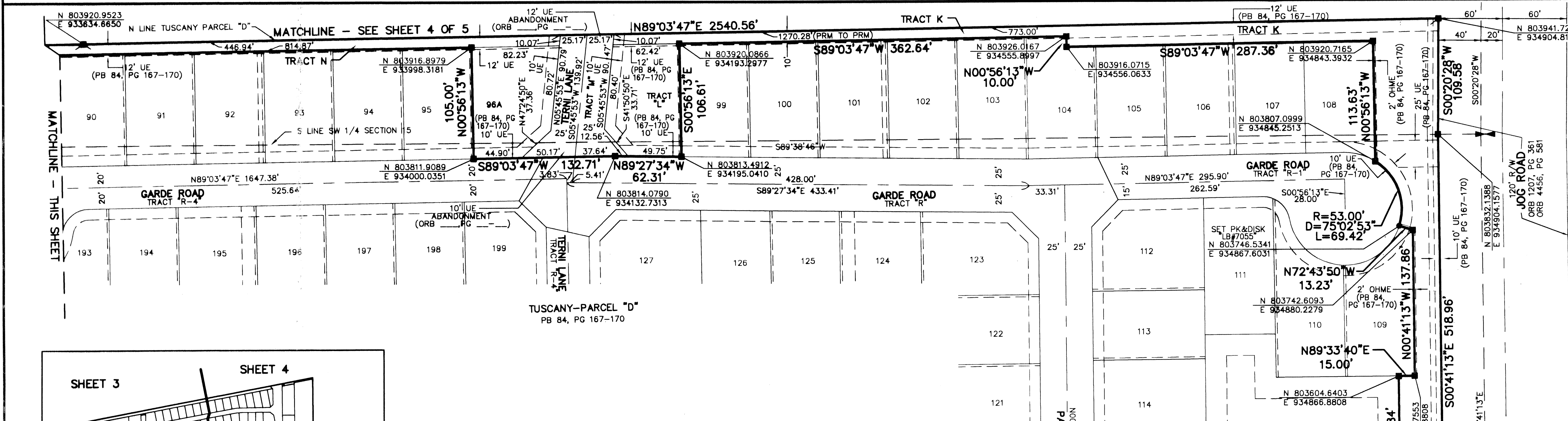
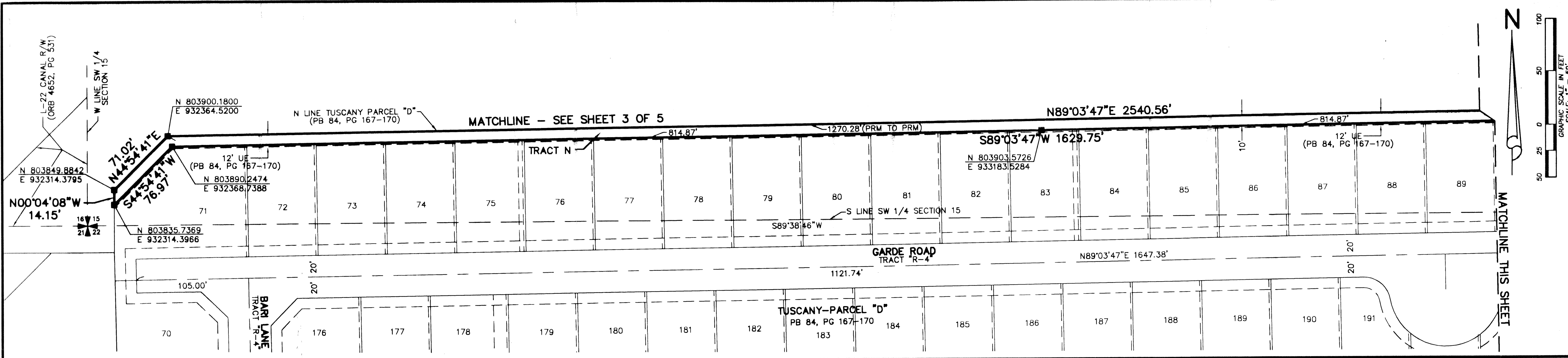


STATE OF FLORIDA
 COUNTY OF PALM BEACH
 THIS PLAT WAS FILED FOR
 RECORD _____ DAY OF _____
 AD, 2001 AND DULY RECORDED
 IN PLAT BOOK _____ ON PAGES
 _____ AND _____
 DOROTHY H. WILKEN, CLERK
 BY: _____, D.C.

CIRCUIT COURT SEAL



TUSCANY - PARCEL "E"

A PLANNED UNIT DEVELOPMENT BEING A PART OF CIBA GEIGY PUD

BEING A REPLAT OF TRACT "V", ABERDEEN-PLAT NO. 24, AS RECORDED IN PLAT BOOK 77, PAGES 174 THROUGH 180, INCLUSIVE, ALSO A PORTION OF PLAT NO. 1, LE CHALET (P.U.D.), AS RECORDED IN PLAT BOOK 31, PAGES 166 THROUGH 167, INCLUSIVE, AND TRACT "L-1", LOTS 96 THROUGH 98, INCLUSIVE, TUSCANY - PARCEL "D", AS RECORDED IN PLAT BOOK 84, PAGES 167 THROUGH 170, INCLUSIVE, ALL OF THE PUBLIC RECORDS OF PALM BEACH COUNTY, FLORIDA. LYING IN SECTIONS 15 AND 16, TOWNSHIP 45 SOUTH, RANGE 42 EAST, PALM BEACH COUNTY, FLORIDA.

MAY, 2001 SHEET 5 OF 5

- LEGEND:**
- C/L CENTERLINE
 - BE BUFFER EASEMENT
 - DB DEED BOOK
 - D DELTA (CENTRAL) ANGLE
 - DE DRAINAGE EASEMENT
 - FND FOUND
 - L ARC LENGTH
 - LAE LIMITED ACCESS EASEMENT
 - LMAE LAKE MAINTENANCE ACCESS EASEMENT
 - LME LAKE MAINTENANCE EASEMENT
 - NO. NUMBER
 - OHME OVERHANG MAINTENANCE EASEMENT
 - ORB OFFICIAL RECORD BOOK
 - PB PLAT BOOK
 - PG(S) PAGE(S)
 - POB POINT OF BEGINNING
 - PUD PLANNED UNIT OF DEVELOPMENT
 - R RADIUS
 - R/W RIGHT-OF-WAY
 - (TYP) TYPICAL
 - UE UTILITY EASEMENT
 - SET 4"x4" CONCRETE MONUMENT
 - LB#7055 UNLESS OTHERWISE NOTED
 - SET PERMANENT CONTROL POINT
 - LB#7055

W Wantman Group, Inc.
 Engineering ♦ Surveying ♦ Mapping
 901 NORTHPOINT PARKWAY, SUITE 204
 WEST PALM BEACH, FL 33407
 (561) 687-2220 phone (561) 687-1110 fax
 CERT No. 6091 - LB No. 7055

CAD	K:\LEVI\TT\TUSCANY\DWG\TUSCRP02		
REF	K:\LEVI\TT\TUSCANY\DWG\TUSCMG01		
FLD	RP/AB	FB. 000	PG. 00
OFF	AJP		DATE 01/07/01
CKD	RBP	SHEET 5 OF 5	DWG 00-020

Tuscany - Parcel E
 PLAT NO. 143
 PLAT MAP # 185A
 ZONING RS
 49-34
 ZIP CODE 33437
 142 442 Le Chalet PUD